



Kaimhill School

School Improvement Priorities 2022-2023

1

Leadership of Change

We will:

- Give staff opportunities to work together, share ideas and drive forward curriculum change.
- Seek the views of all staff, learners, parents and partners on a range of school developments.
- Give all staff more opportunities to use data and self-evaluation outcomes more robustly to inform next steps for learners and school wide improvements.
- Ensure our children and partners are very clear about the impact of their contributions to the school's improvement journey.

2

Learning, Teaching & Assessment Curriculum

We will:

- Develop a play-based curriculum in P1 and P2.
- Review and refresh our curricular approaches in Writing, IDL, Health & Wellbeing and Meta Skills.
- Support all pupils to become Assessment Capable Learners by using our Kaimhill School Learning, Teaching and Assessment Framework.
- Strengthen our partnerships in the local and wider community to support learning across the totality of the curriculum.

3

Ensuring Wellbeing, Equality & Inclusion

We will:

- Use Emotion Works across all year groups.
- Ensure all our learners feel included and very well supported using Circle, SHANARRI and Emotion Works.
- Compassionate & Connected Communities – Year 2.
- Respect Me – update and refresh antibullying policy.
- Increase and strengthen parental partnerships so they feel informed and involved in the life and learning of Kaimhill School.
- Develop our outdoor spaces to support pupil engagement and wellbeing

4

Raising Attainment & Achievement

We will:

- Work as a whole staff to increase attainment in literacy and numeracy.
- Ensure a consistent approach to teaching writing in all classes, with raised attainment.
- Develop robust tracking in Health & Wellbeing to support delivery of effective interventions.

Success will be when



5

Enhanced Provision

We will:

- Provide staff with training to support learning and development within the Rainbow Room.
- Ensure quality assurance processes capture the milestones for each child, and next steps are planned and supported in a timely manner.
- Work closely with partners to remove barriers to learning and development.
- Continue to develop our spaces and environment, including the outdoors.
- Ensure learners benefit from a wide range of achievement opportunities, and share all successes with grown-ups at home.

All staff have clear evidence of the impact of their teaching in raising attainment – 'Know Thy Impact'

The majority of our pupils are achieving expected Curriculum for Excellence levels in literacy and numeracy within 3 years.

Our pupils can confidently articulate the 'what', 'why' and 'how' of their learning, including next steps.

Our pupils are clear about the contribution they make to school improvement and feel valued as effective contributors.

Our pupils have access to high quality resources, spaces and interventions to promote positive wellbeing and readiness to learn.

Our parents and partners from ELC-Primary 7 are more informed about learning at Kaimhill School and how they can help.

Leadership of learning and change is a key feature for all staff and learner groups across the school community.



ELC Improvement Priorities 2022-2023

6

Early Learning and Childcare

We will:

- *Provide opportunities for children to learn through spontaneous play, well-planned play and real-life experiences.*
- *Ensure children and families are well informed about learning and that successes are celebrated.*
- *Consider each child as an individual with their own needs and rights.*
- *Communicate with families more effectively to improve partnerships.*

Success will be when

The environment is set up to promote curiosity, creativity and independence.

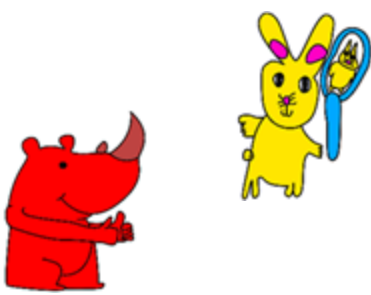
Children are fully engaged in their play.

Staff are consistent in their interactions with children and communication with families – including use of Seesaw etc.

Our paperwork and documentation will reflect the learners – clearly outlining how staff can support individuals.

Families feel valued; communicated with and understand where their child is at in their learning.





Kaimhill School

Our Plan for Making our Wonderful School Even Better!

<p>My teachers work together to make my learning even better.</p>	<p>The school asks me, my parents and other grown-ups how school can be better.</p>	<p>I know that I make a difference to our school, and can tell you how.</p>	<p>I have friends, grown-ups and spaces in school that help me feel safe, and ready to learn.</p>
<p>We have lots of people who help us learn, in school and in the community.</p>	<p>I have opportunities to learn through play – indoors and outdoors.</p>	<p>I know what SHANARRI means for my wellbeing.</p>	<p>My grown-ups are encouraged to get involved in school life.</p>
<p>My teacher knows how to help me progress in my learning.</p>	<p>I can see that I am progressing in my learning.</p>	<p>My grown-ups know how to help me progress in my learning.</p>	<p>I can tell you what my next steps in learning are.</p>

